

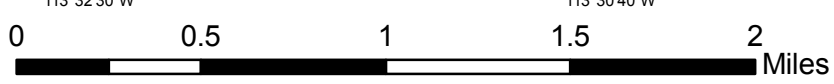
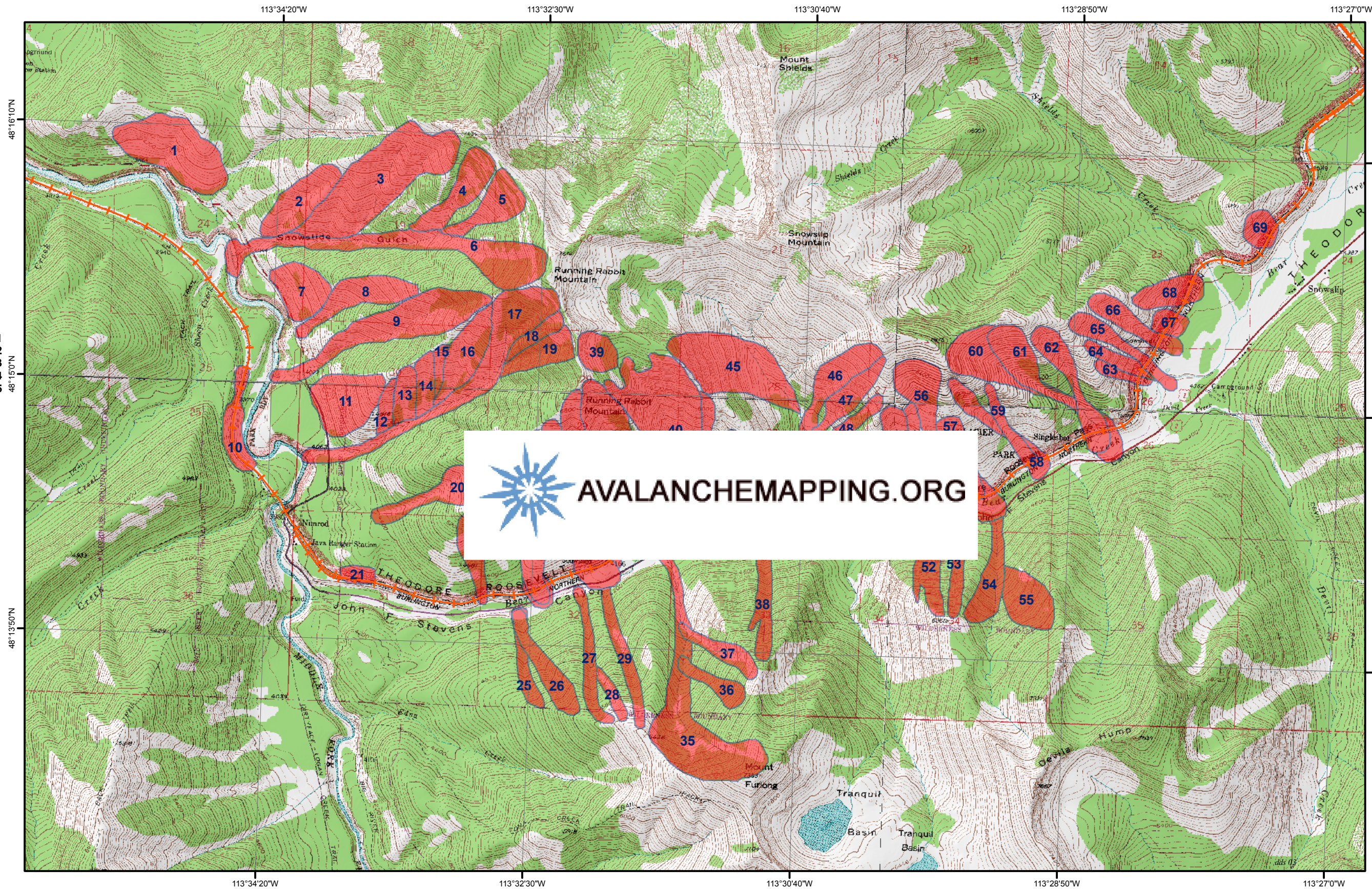
AVALANCHE PATHS OF JOHN F. STEVENS CANYON, GLACIER NATIONAL PARK, MONTANA

AVALANCHE PATHS:


1. Never Runs
2. Goat Lick Low
3. Goat Lick Main
4. Goat Lick High 3
5. Goat Lick High 2
6. Goat Lick High 1
7. Hanging Tree N
8. Hidden
9. Hanging Tree Main
10. Java Gauntlet
11. Hanging Tree S
12. I Beam Low 1
13. I Beam Low 2
14. I Beam Low 3
15. I Beam Low 4
16. I Beam Mid
17. I Beam Main
18. I Beam High 1
19. I Beam High 2
20. Nimrod
21. Java
22. No Shed
23. Shed 11 W
24. Shed 11 E
25. Question Mark Gully 1
26. Question Mark Gully 2
27. Question Mark Gully 3
28. Question Mark Gully 4
29. Question Mark Gully 5
30. Shed 10.7 W
31. Shed 10.7 E
32. Elk
33. 1163 Low
34. 1163

AVALANCHE PATHS:

35. Broken Bridge
36. Broken Bridge 2
37. Broken Bridge 1
38. Mo
39. Shed 10 High
40. Shed 10
41. Shed 10 Low 1
42. Shed 10 Low 2
43. Second Slide Left
44. Second Slide
45. Grizzly Face
46. Grizz 3
47. Grizz 2
48. Grizz 1
49. Jake's
50. Infinity
51. Infinity High
52. Curly
53. Larry
54. Silver Stairs West
55. Silver Stair East
56. Shed 9
57. Shed 9 Low
58. Shed 8
59. Shed 8 Low
60. Shed 7 W
61. Shed 7 Mid
62. Shed 7 E
63. Shed 6 Low
64. Shed 6
65. Shed 5
66. Shed 4-D
67. Shed 4-D Low
68. Shed 4-C/Burn Out
69. Elk Fence



Data Sources: 1:24K Topographic Maps and DEMs from the NRCS, and Montana State NRIS, Avalanche Data from BNSF/Glacier National Park Avalanche Study 2004. This map only depicts Avalanche paths that have been observed by BNSF and Park Officials that have been collected for the corridor. It in no way shows all the possible avalanches that could occur in this area.

 COPYRIGHT 2009
DOUGLAS D SCOTT
AVALANCHEMAPPING.ORG
247, 637B, S. BROADWAY
BOULDER, CO. 80305



THIS DATASET IS TO BE USED AS REFERENCE ONLY AND IS NO SUBSTITUTE FOR SKILL, EXPERIENCE AND PROPER EDUCATION. AVALANCHEMAPPING.ORG IS NOT RESPONSIBLE FOR ANY INJURY, ACCIDENT, OR DEATH AS A RESULT OF USING THIS DATASET.

